

8230 Thomas Nelson Highway, Lovingson, VA

Property Info

Zoning: Commercial - Industrial

Acres: 9

Utilities: Water/Sewer/
Broadband

Parcel: 67-A-27

Building Sq Ft: 56,750

Transportation

Airports: 36 miles to Lynchburg Airport and 44 miles to Charlottesville Airport

Distance to 64: 35 miles

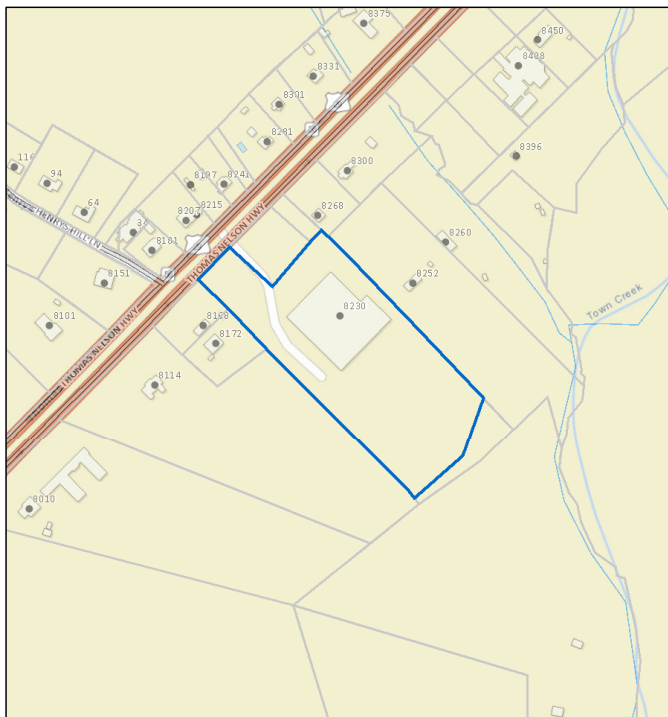
Notes

Former garment factory building

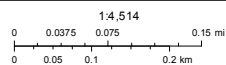
Reinforced concrete

Central air conditioning throughout

Former Garment Factory

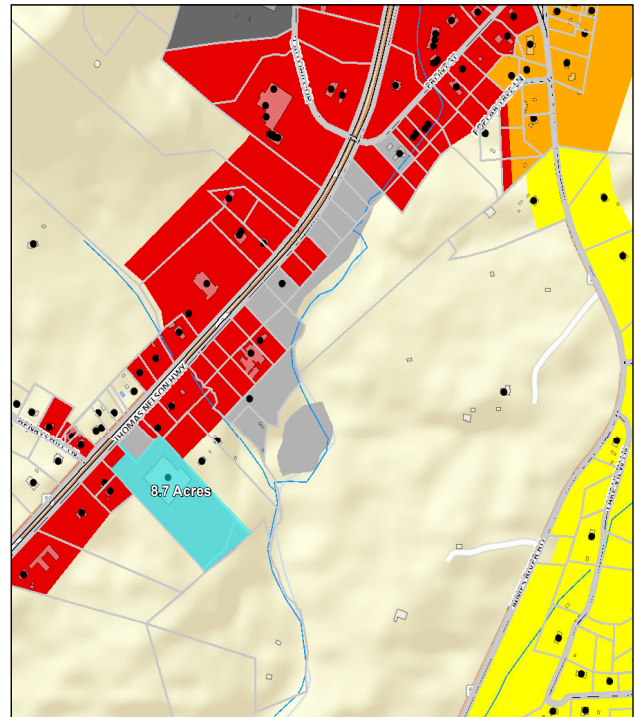


September 30, 2018

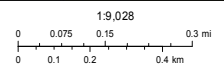


Sources: Esri, HERE, Garmin, USGS, Intermap, INCREMENT P, NRCan, Esri Japan, METI, Esri China (Hong Kong), Esri Korea, Esri (Thailand), NGCC, © OpenStreetMap contributors, and the GIS User Community

50,000SF Industrial Building



October 3, 2018



Sources: Esri, HERE, Garmin, USGS, Intermap, INCREMENT P, NRCan, Esri Japan, METI, Esri China (Hong Kong), Esri Korea, Esri (Thailand), NGCC, © OpenStreetMap contributors, and the GIS User Community